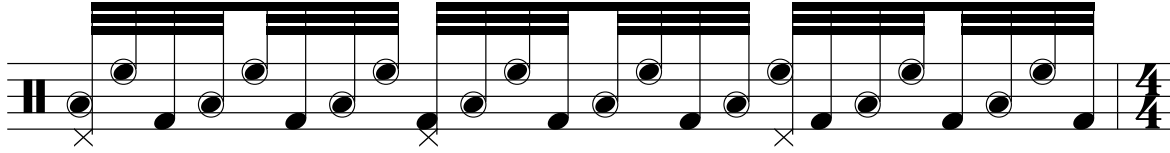


PATTERN CONTROL FOR DRUM SET

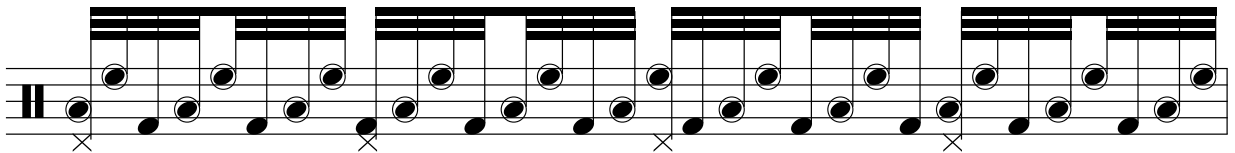
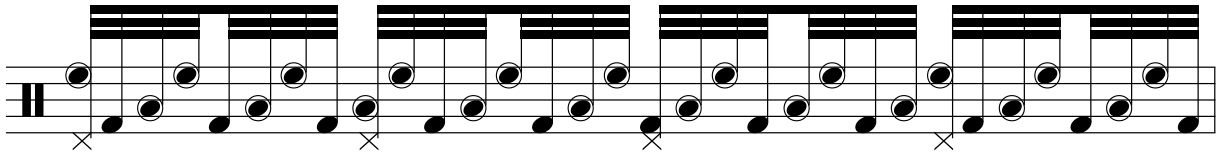
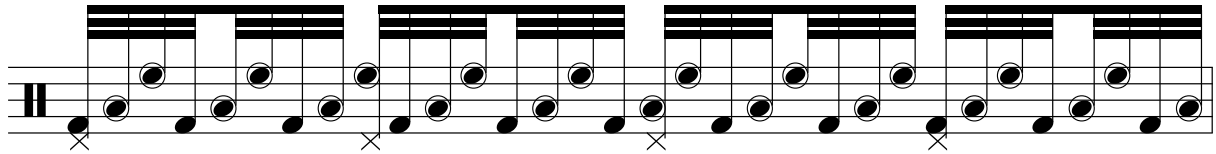
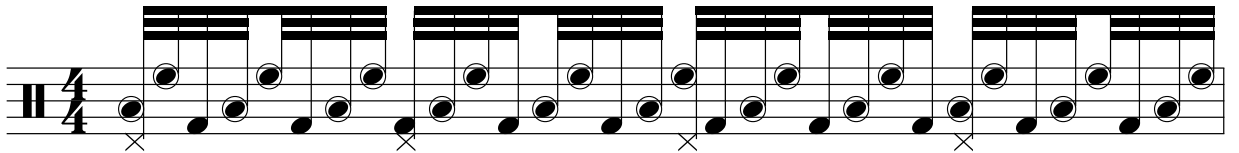
RLF AS 32ND NOTES

WWW.BANGTHEDRUMSCHOOL.COM

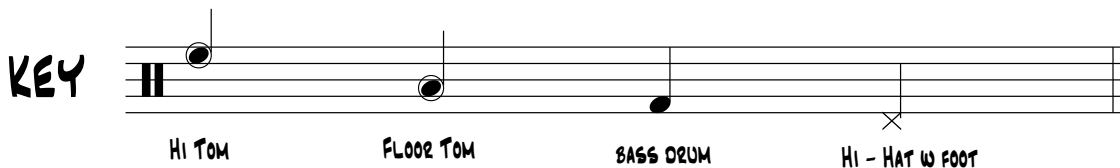
1. THE RHYTHMIC "KEY" --NOTE IT TAKES 3 QUARTER NOTES FOR THE PATTERN TO RESOLVE.



2. FOUR MEASURES OF THE PATTERN --NOTE IT TAKES ONLY 3 MEASURES FOR THE PATTERN TO RESOLVE.



NOTE: THE HI-HAT WITH THE LEFT FOOT IS OPTIONAL, BUT SUGGESTED AS AN ABILITY THAT YOU HAVE "IN YOUR POCKET" IF NEEDED.



WWW.BANGTHEDRUMSCHOOL.COM