

FOURS, SIXES AND EIGHTS AS 32NDOS

(USING DOUBLE BASS)

THE VOCABULARY OF "GERMS"



FOUR

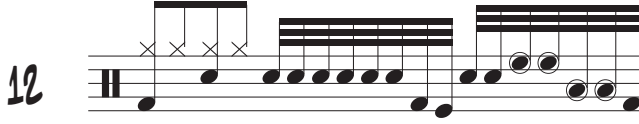
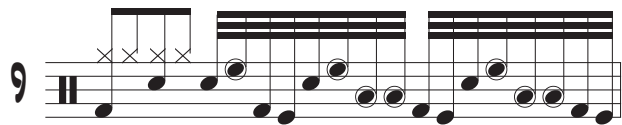
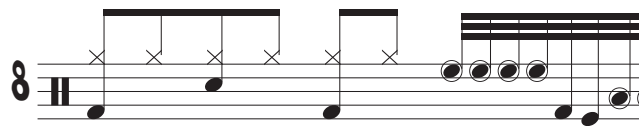
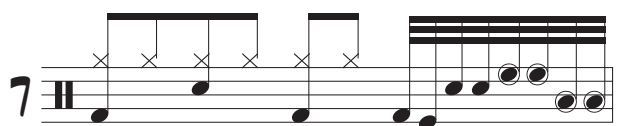
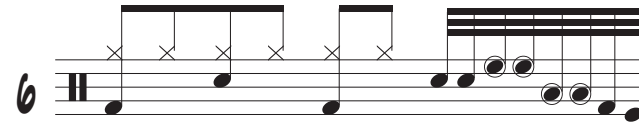
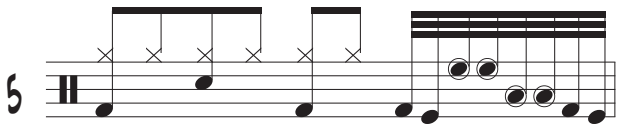
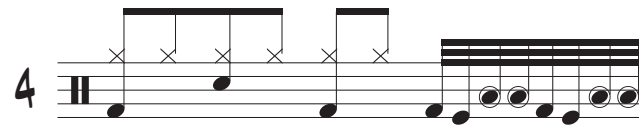
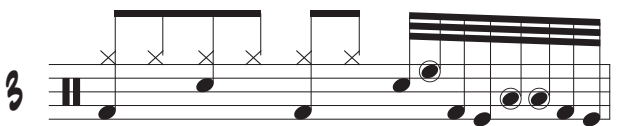
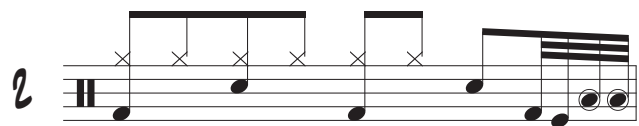
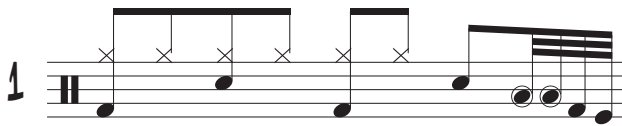


SIX

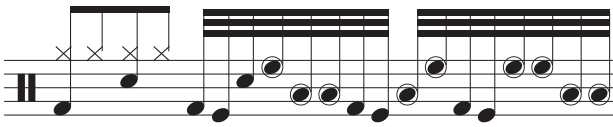


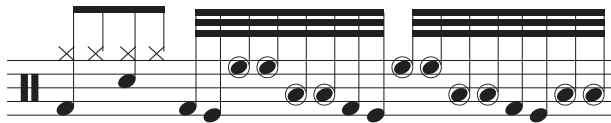
EIGHT


SOME EXAMPLES/EXERCISES

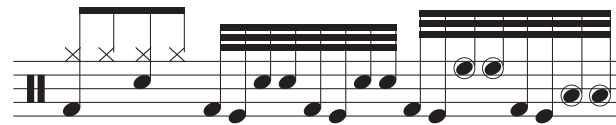



FOURS, SIXES AND EIGHTS AS 32NOS

14  Exercise 14: A single staff of music with a double bar line on the left. It contains three measures. The first measure has four eighth notes marked with 'x' (hi-hat). The second measure has six eighth notes. The third measure has eight eighth notes.

15  Exercise 15: A single staff of music with a double bar line on the left. It contains three measures. The first measure has four eighth notes marked with 'x' (hi-hat). The second measure has six eighth notes. The third measure has eight eighth notes.

16  Exercise 16: A single staff of music with a double bar line on the left. It contains three measures. The first measure has four eighth notes marked with 'x' (hi-hat). The second measure has six eighth notes. The third measure has eight eighth notes.


17  Exercise 17: A single staff of music with a double bar line on the left. It contains three measures. The first measure has four eighth notes marked with 'x' (hi-hat). The second measure has six eighth notes. The third measure has eight eighth notes.

18  Exercise 18: A single staff of music with a double bar line on the left. It contains three measures. The first measure has four eighth notes marked with 'x' (hi-hat). The second measure has six eighth notes. The third measure has eight eighth notes.

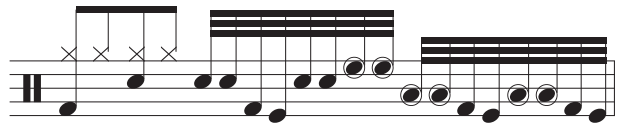
19  Exercise 19: A single staff of music with a double bar line on the left. It contains three measures. The first measure has four eighth notes marked with 'x' (hi-hat). The second measure has six eighth notes. The third measure has eight eighth notes.

20  Exercise 20: A single staff of music with a double bar line on the left. It contains three measures. The first measure has four eighth notes marked with 'x' (hi-hat). The second measure has six eighth notes. The third measure has eight eighth notes.

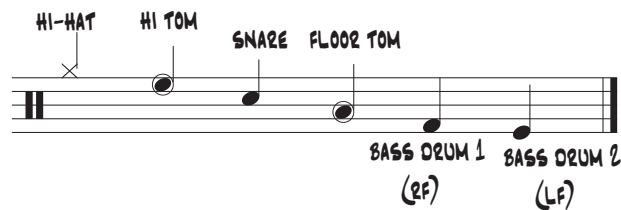
21  Exercise 21: A single staff of music with a double bar line on the left. It contains three measures. The first measure has four eighth notes marked with 'x' (hi-hat). The second measure has six eighth notes. The third measure has eight eighth notes.

22  Exercise 22: A single staff of music with a double bar line on the left. It contains three measures. The first measure has four eighth notes marked with 'x' (hi-hat). The second measure has six eighth notes. The third measure has eight eighth notes.

23  Exercise 23: A single staff of music with a double bar line on the left. It contains three measures. The first measure has four eighth notes marked with 'x' (hi-hat). The second measure has six eighth notes. The third measure has eight eighth notes.

24  Exercise 24: A single staff of music with a double bar line on the left. It contains three measures. The first measure has four eighth notes marked with 'x' (hi-hat). The second measure has six eighth notes. The third measure has eight eighth notes.

KEY



HI-HAT HI TOM SNARE FLOOR TOM

BASS DRUM 1 (RF) BASS DRUM 2 (LF)

The key diagram shows a single staff of music with a double bar line on the left. It contains five notes: a quarter note marked with 'x' (HI-HAT), a quarter note (HI TOM), a quarter note (SNARE), a quarter note (FLOOR TOM), and a quarter note (BASS DRUM 1). Below the staff, the notes are labeled: BASS DRUM 1 (RF) and BASS DRUM 2 (LF).